



TERMINATOR

DIODE LASER HAIR SYSTEM-B-18



1800W LASER POWER

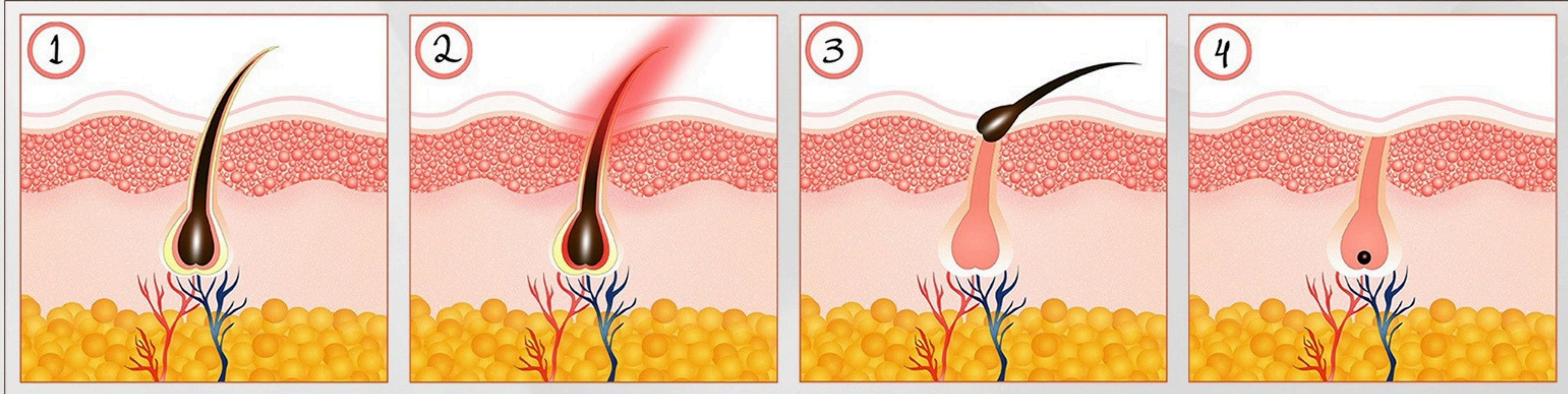
INTELLIGENT SPOT SIZE ADJUSTMENT

TRIPLE-WAVELENGTH 755NM/808NM/1064NM



Laser hair removal uses a laser that removes the hair follicle by targeting the melanin in the follicle. Melanin is the pigment that provides color to the hair. The presence of melanin allows the laser to precisely target, heat and destroy the hair follicle.

PRINCIPLE





1800W POWER

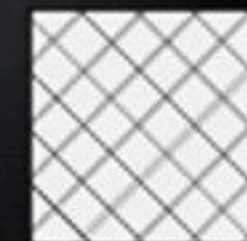
A variety of different powers and different spot sizes are available to meet the treatment needs of different parts of the customer



12*36mm



12*24mm



12*12mm

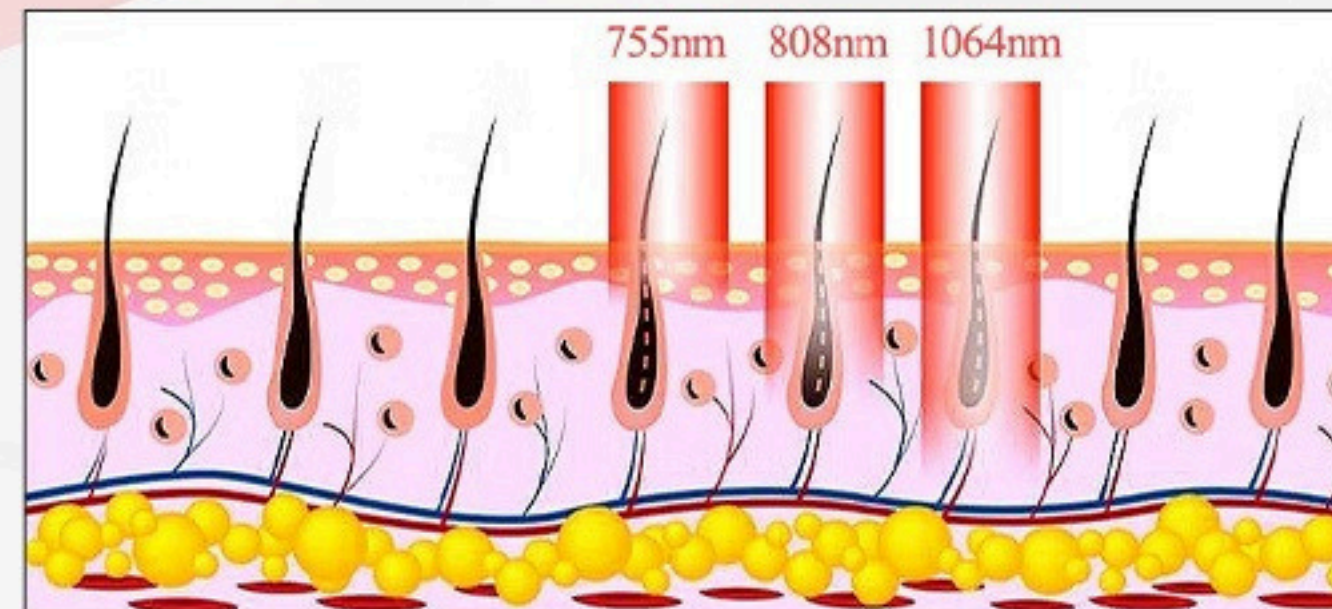


6mm

3 WAVELENGTHS CORRESPOND TO DIFFERENT HAIR COLORS



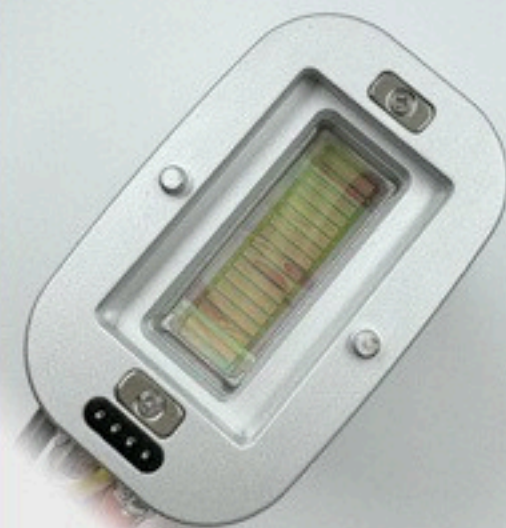
- 755 nm for white skin (fine, golden hair removal)
- 808 nm for yellow neutral skin (brown hair removal)
- 1064 nm for black skin (black hair removal)



HIGH QUALITY SPARE PARTS

ENSURE ADVANCED PERFORMANCE

**LASER
BAR**



Ensures longer lifespan, high energy output and stable performance

**COOLING
PLATES**



Ensure the stable continuous contact cooling on handpiece

FILTER



Completely remove impurities and ions to protect diode laser

**GERMANY
PUMP**



high pressure, large water flow, good heat dissipation, low noise

**TEC
CONDENSER**



High power Compressor make good cooling effect and machine with long life and stable





D02

TECHNICAL FEATURES

HIGH-QUALITY ACCESSORIES, REFINED DESIGN, STABLE PERFORMANCE



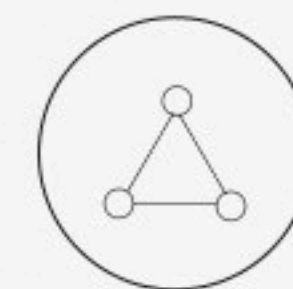
USA Coherent laser bars

USA Coherent laser bars, and the energy focusing effect is strong. The second quality inspection of imported materials, responsible for the person 100% guarantee quality.



Technical Support

Intelligent operation, real-time detection of water temperature and water flow rate, ensuring safe operation and prolonging the service life of the machine.



Reasonable Internal Structure

The internal structure is reasonable, the water and electricity are separated, and the high-con-figuration accessories are built in, which effectively prevents malfunctions.

15.4 true color LCD touch screen

2.0 LCD handle touch screen



MACHINE DETAIL

DETAILED DISPLAY OF ALL ASPECTS OF THE MACHINE

PRODUCT PARAMETERS



| Item | Specification |
|------------------|------------------------------|
| | |
| Light sources | Diode(continuous wave) |
| | |
| Laser wavelength | 755+808+940(optional)+1064nm |
| | |
| Energy | 60J/cm ₂ |
| | |
| Pulse width | 10–100ms |

| | |
|-------------------|--|
| Frequency | 10HZ |
| | |
| Power | 1800W |
| | |
| Cooling | Aggressive Sapphire contact cooling |
| | |
| Display | 15.6 True Color LCD Touch Screen |
| | |
| Rated input power | AC230V +10%15A+ 60/50HZ/AC110V +10%60Hz:(optional) |