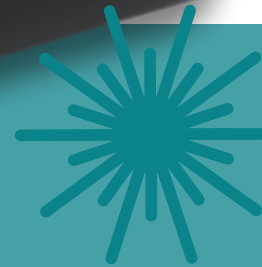
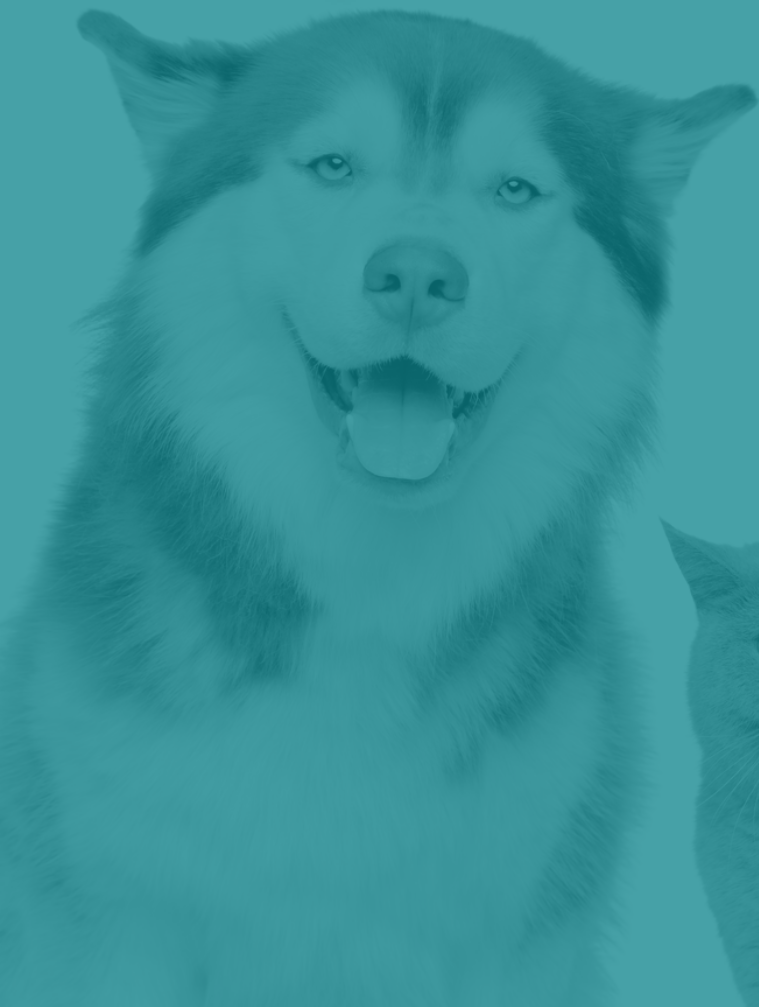




LUMICALM



VETERINARY LASER



BEAUTY **BL** LIGHT

Anything is possible



LumiCalm: Benefits

Providing a non-invasive laser therapy provides benefits to the patient and the clinician as it offers a quiet, pain free alternative to traditional medicines. HPL allows for further development of veterinary practices by providing an effective solution for the most commonly treated chronic pain conditions in daily practice

For musculo skeletal conditions

Arthritis, tendinitis, fractures, neurological injuries, post-operative ligament ruptures, post-operative pain



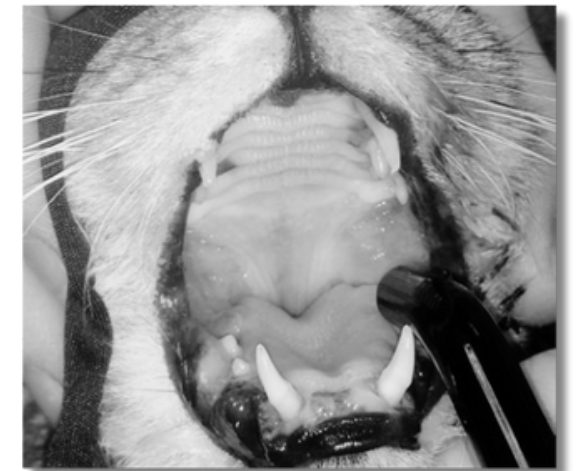
For wound and dermatology

Incisions, wounds, bites, burns, lick granuloma, dermatitis



Infections, oral and dental diseases

Rhinitis, sinusitis, gingivo stomatitis, otitis, cystitis



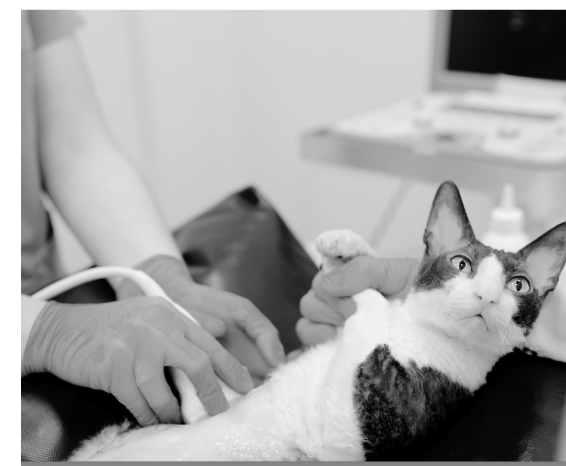
Benefits for the vet

Expertise, high level of compliance, customer loyalty, long term relationship, return on investment



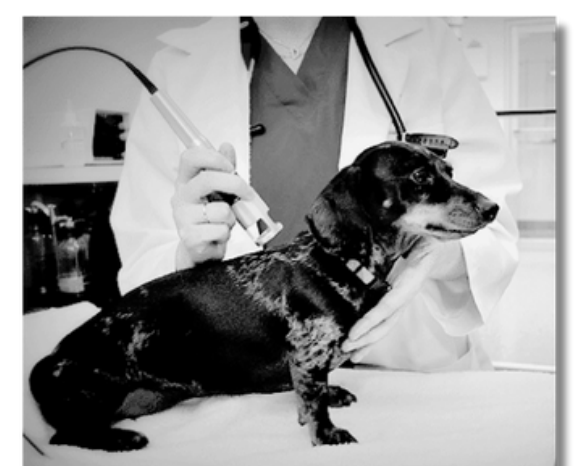
Benefits for the client

Efficient, quick results, less medication



Benefits for the animal

Quick pain relief, non-invasive, no pain, no side effects, short treatment time, reduced treatment stress





LumiCalm: Features

THREE WAVELENGTHS HUNDREDS OPTIONS

LumiCalm can emit three wavelengths of laser from a single device. Each wavelength has better curative effect on specific indication.

450nm Blue Laser

Traditional laser needs tip initiation to cut soft tissue, which is time-consuming and highly dependent on operator's experience. The cutting efficiency is dramatically different between good and bad tip initiation. Blue laser is strongly absorbed by proteins, with 60 times absorption higher than that of traditional lasers. It can cut tissues at very high speed without tip initiation to reduce thermal damage and guarantee the excellent repeatability of cutting effect.

980 / 810nm Near Infrared Laser

With strong anti-bacterial and anti-inflammatory effects, it is very suitable for urinary tract infection and edema.

635nm Red Laser

635nm is in the optical window of tissue, so it can penetrate very deep to reach the affected area. With excellent photobiomodulation effect, it is very suitable for laser therapy, such as pain relief and wound healing acceleration.



FOCUS ON DETAILS STRIVE FOR PERFECTION

Display of charging status under shutdown

Hidden air inlet

Rotary handpiece holder

Hidden handle

Hidden fiber management system

High-efficiency silent fan



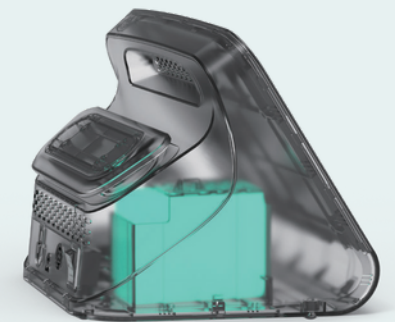
8-inch IPS Touchscreen

Works with wet hands and medical gloves



Built-in High-performance Lithium Battery

Last for one week in normal use



Waterproof Wireless Footswitch

Connection with AES-128 encryption



High-end Suitcase

Waterproof, dustproof and shockproof



Android smart system



LumiCalm updates its widely acclaimed operation system based on Android after a variety of upgrades to make it more humanized and intelligent.



ENGINEERED FOR DURABILITY BEYOND STANDARD

Quality is always our core value. To pursue this goal, SOLASE Pro has carried out 105 additional reliability tests beyond CE and FDA standards.

Handpiece Dust-burning Test

The output window of laser handpiece can be easily burned after being contaminated, which is a common problem in the laser industry. Beautylight developed over three years for its FiberDura technology to completely solve this problem. Verified by test, the laser-emitting window filled with graphite powder remains undamaged after working for 2 hours under 3W laser output.

Footswitch IPX8 Waterproof Test

2 meters underwater for 30 minutes, no damage

After continuously working under highest laser output for 180 days, the power drop does not exceed 0.2W

180-day Stability Test

12-hour Vibration Test Continuous vibration for 12 hours

Thermal Shock Test

-20°C~60°C rapid temperature shock, 5 cycles

Fiber Tips Insertion Test

After plugging to the laser handpiece for 1000 times, the power drop does not exceed 0.2W



Technical advantages



15



30

THERAPY HANDPIECE

LASER SPOT DIAMETER 15-30MM
ADJUSTABLE

The diameter of our new designed therapy handpiece can be adjusted from Φ 15-30mm to cover the affected area with different size.

- All metal construction, rugged and durable
- Autoclavable spacer to prevent cross-infection

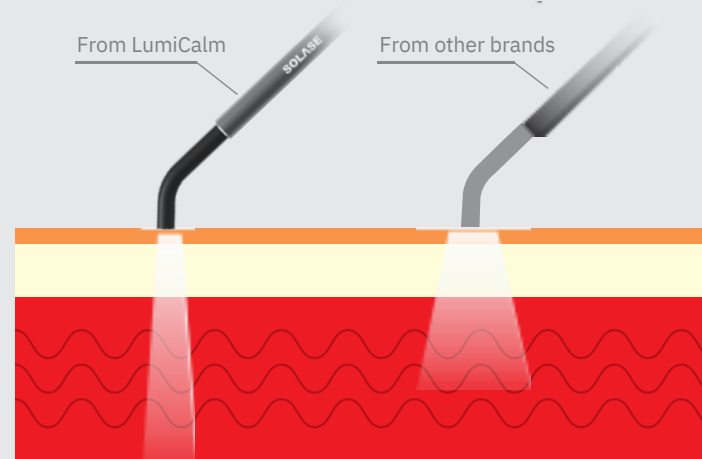


COLLIMATED LASER DESIGN

BIOSTIMULATION HANDPIECE

DEEPER PENETRATION BY COLLIMATED LASER BEAM

Our specially designed biostimulation handpiece makes collimated laser beam, which can penetrate into the deeper tissue to get a better laser therapy effect.



ANTI-PEELING COATING DESIGN

FastFiber TIPS

PRE-INITIATED TIP WITH PEEL-RESISTANT COATING

FastFiber tips are disposable and autoclavable. It is ready to use, no need for fiber stripping and cutting. It saves your time and avoids cross-infection.

Beautylight has developed a new pre-initiated tip with a durable, peel-resistant black coating. The special coating withstands high temperature during laser cutting, ensuring a smooth and fast surgical treatment.





Indications

Lombalgia

Oral/dental diseases

Dermatitis

Fractures

Otitis

Dysplasia

Pododermatitis

Pyodermitis

ACL

Neurological injuries

Gingivostomatitis

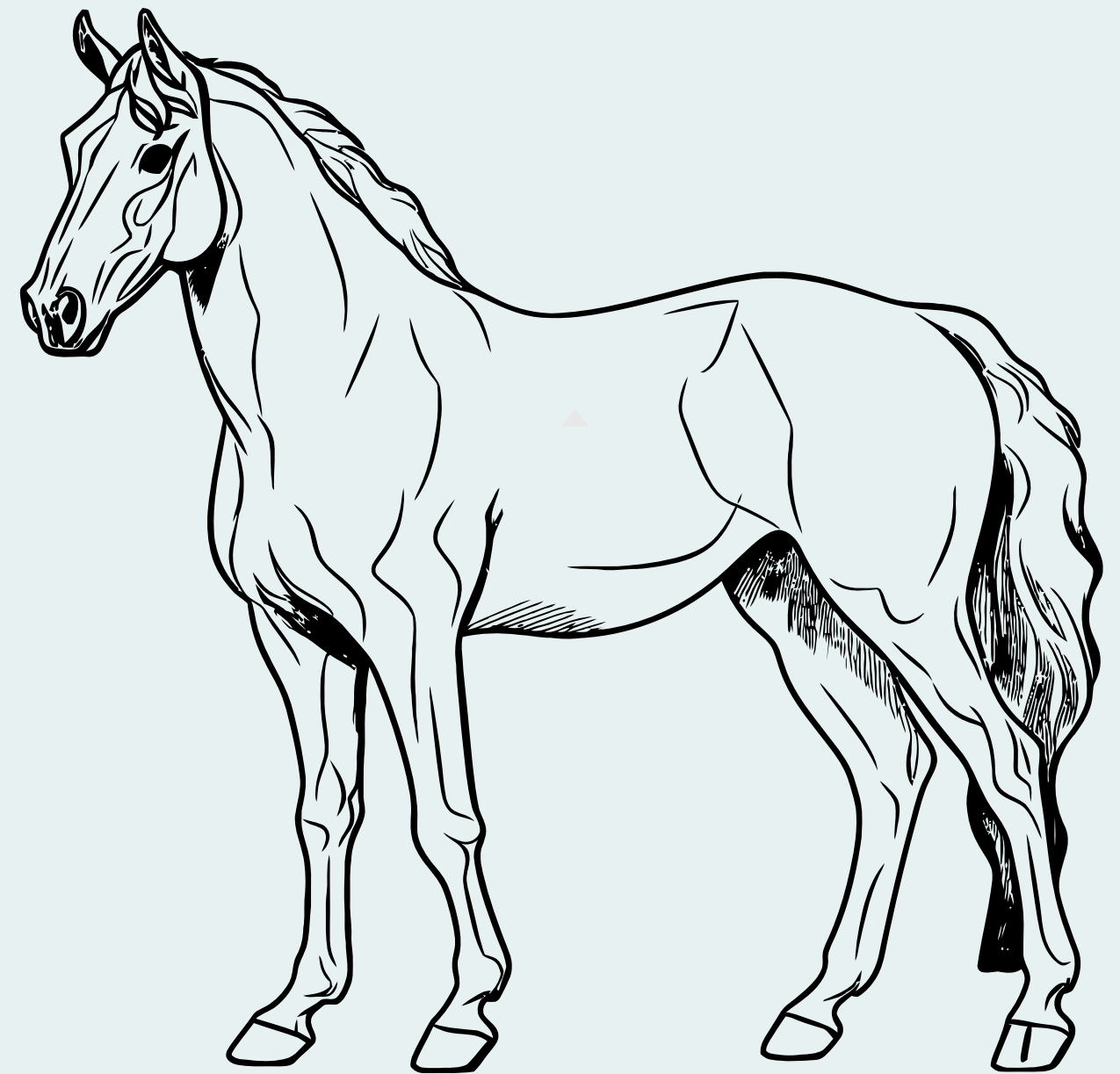
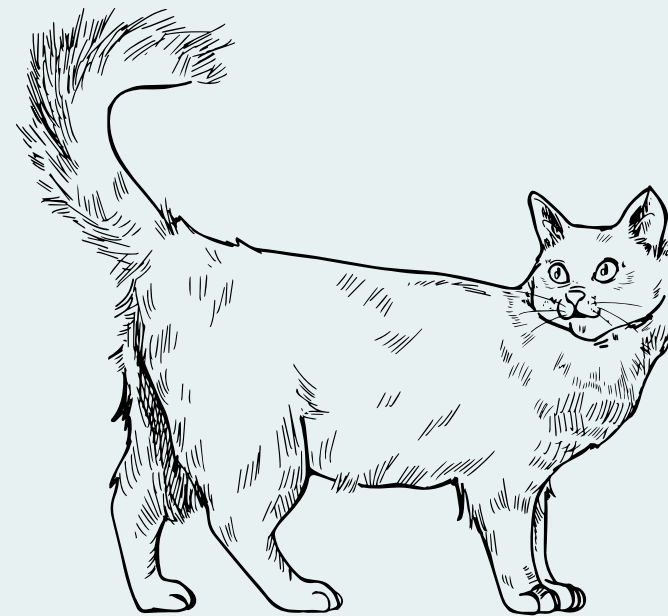
Osteoarthritis

Phlebitis

Myositis

Post-op oedema

Tendinopathies





Parameters

Wavelength and Max. Power.

Solase Vet-31: Solase Vet-21:
450nm: 3W@CW, 5W@pulse 635nm: 400mW@CW
635nm: 400mW@CW 980nm: 16W@CW,
24W@pulse 980nm: 8W@CW, 12W@pulse

Pulse Duration

10 μ s-0.9s

Pulse Repetition Rate

Up to 50kHz

Tip Diameter

200 μ m, 300 μ m, 400 μ m

Power Supply Input

100-240VAC, 50-60Hz

Battery Pack

Li-ion Rechargeable, Last for one week with normal use

Size / Weight

214 x 150 x 149 mm, 1.6kg



BEIJING BEAUTYLIGHT SCIENCE AND TECHNOLOGY CO.,LTD